

Parent Survey 2014

We have been asked to administer the following survey to you. Please answer this survey about your child's experience here. The information is valuable to us, as we move to continuously improve AIMS. This survey is fed directly into the Department of Education, which will then produce a report concerning the results. All participants are anonymous

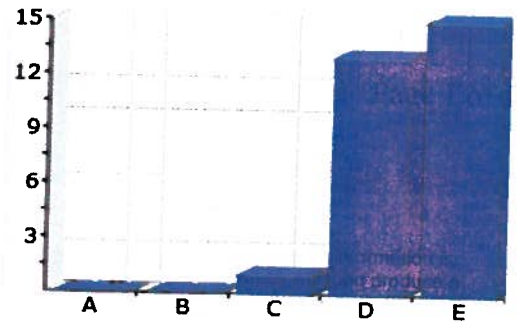
Begin: 2014-05-02 00:00:04.0 (EST)
 End: 2014-05-07 12:00:04.0 (EST)

Anonymous: Yes

1) My child is safe at school.

- A. (0/29 = 0%) Do not know
- B. (0/29 = 0%) Strongly Disagree
- C. (1/29 = 3%) Disagree
- D. (13/29 = 44%) Agree
- E. (15/29 = 51%) Strongly agree

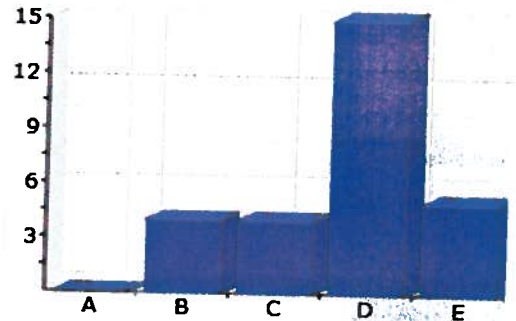
Average Answer= 4.48



2) My child's school building is in good repair and has sufficient space to support quality education.

- A. (0/28 = 0%) Do not know
- B. (4/28 = 14%) Strongly Disagree
- C. (4/28 = 14%) Disagree
- D. (15/28 = 53%) Agree
- E. (5/28 = 17%) Strongly agree

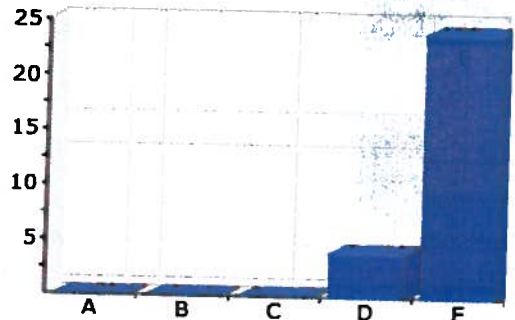
Average Answer= 3.75



3) My child's school holds high expectations for academic achievement

- A. (0/28 = 0%) Do not know
- B. (0/28 = 0%) Strongly Disagree
- C. (0/28 = 0%) Disagree
- D. (4/28 = 14%) Agree
- E. (24/28 = 85%) Strongly agree

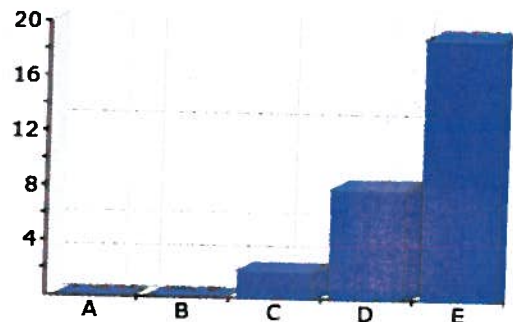
Average Answer= 4.86



4) My school facilitates my knowledge about my child's progress.

- A. (0/29 = 0%) Do not know
- B. (0/29 = 0%) Strongly Disagree
- C. (2/29 = 6%) Disagree
- D. (8/29 = 27%) Agree
- E. (19/29 = 65%) Strongly agree

Average Answer= 4.59



5) The school offers adequate access to up to date computer and technologies

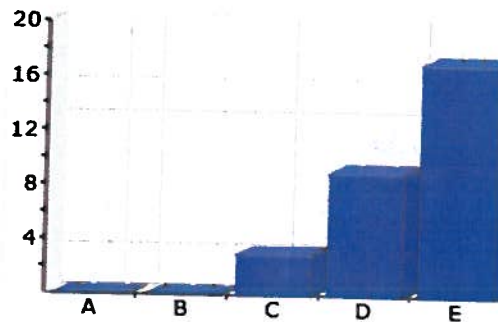
- A. (0/29 = 0%) Do not know
- B. (0/29 = 0%) Strongly Disagree
- C. (3/29 = 10%) Disagree
- D. (9/29 = 31%) Agree
- E. (17/29 = 58%) Strongly agree

Average Answer= 4.48

6) Discipline at the school facilitates the learning environment

- A. (1/29 = 3%) Do not know
- B. (0/29 = 0%) Strongly Disagree
- C. (0/29 = 0%) Disagree
- D. (8/29 = 27%) Agree
- E. (20/29 = 68%) Strongly agree

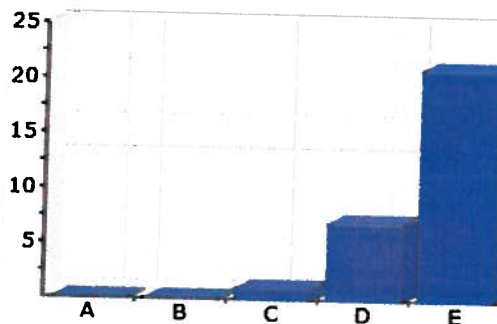
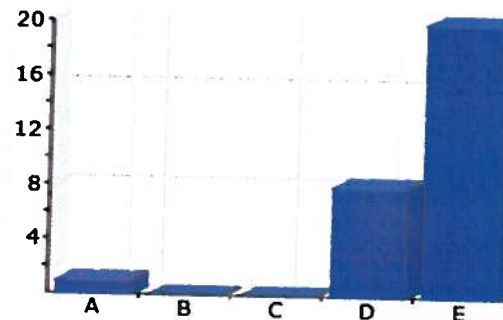
Average Answer= 4.59



7) I have access to sufficient information regarding my child's academic progress

- A. (0/29 = 0%) Do not know
- B. (0/29 = 0%) Strongly Disagree
- C. (1/29 = 3%) Disagree
- D. (7/29 = 24%) Agree
- E. (21/29 = 72%) Strongly agree

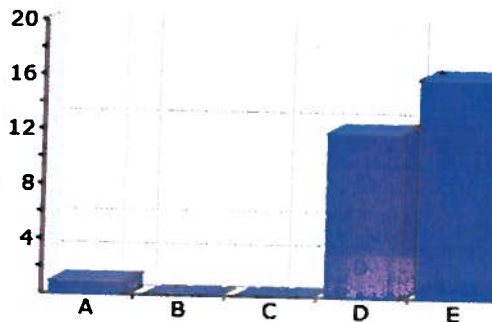
Average Answer= 4.69



8) instructional staff employs various instructional methods and strategies to meet my child's needs

- A. (1/29 = 3%) Do not know
- B. (0/29 = 0%) Strongly Disagree
- C. (0/29 = 0%) Disagree
- D. (12/29 = 41%) Agree
- E. (16/29 = 55%) Strongly agree

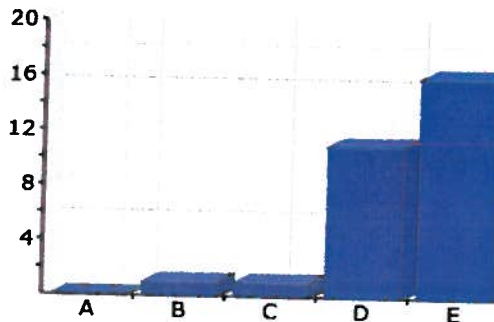
Average Answer= 4.45



9) My child takes responsibility for his/her own learning

- A. (0/29 = 0%) Do not know
- B. (1/29 = 3%) Strongly Disagree
- C. (1/29 = 3%) Disagree
- D. (11/29 = 37%) Agree
- E. (16/29 = 55%) Strongly agree

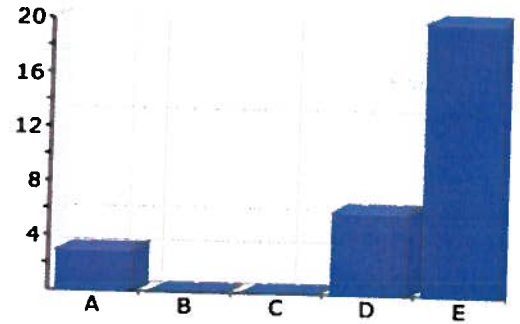
Average Answer= 4.45



10) I have been able to schedule a parent conference if needed.

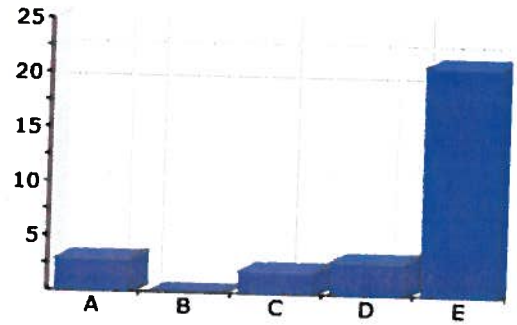
- A. (3/29 = 10%) Do not know
- B. (0/29 = 0%) Strongly Disagree

C. (0/29 = 0%) Disagree
 D. (6/29 = 20%) Agree
 E. (20/29 = 68%) Strongly agree
 Average Answer= 4.38



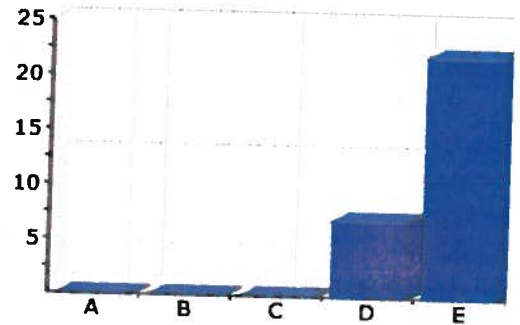
11) When I have had a parent conference, faculty and staff have been helpful and knowledgeable

A. (3/29 = 10%) Do not know
 B. (0/29 = 0%) Strongly Disagree
 C. (2/29 = 6%) Disagree
 D. (3/29 = 10%) Agree
 E. (21/29 = 72%) Strongly agree
 Average Answer= 4.34



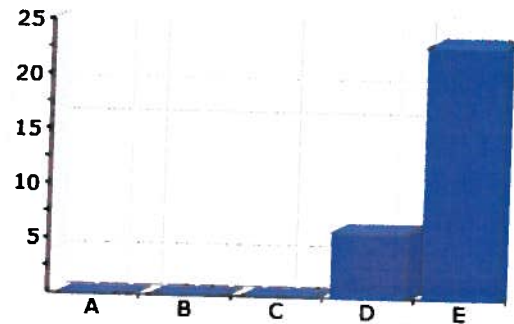
12) The school does a good job teaching my child to read and write

A. (0/29 = 0%) Do not know
 B. (0/29 = 0%) Strongly Disagree
 C. (0/29 = 0%) Disagree
 D. (7/29 = 24%) Agree
 E. (22/29 = 75%) Strongly agree
 Average Answer= 4.76



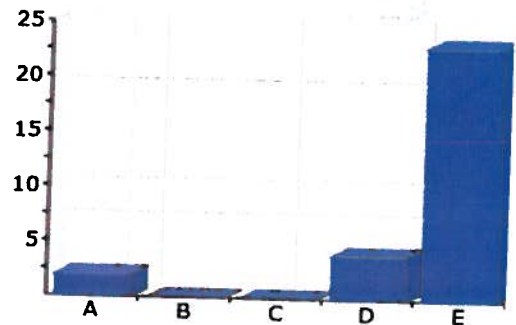
13) The school does a good job of teaching my child math

A. (0/29 = 0%) Do not know
 B. (0/29 = 0%) Strongly Disagree
 C. (0/29 = 0%) Disagree
 D. (6/29 = 20%) Agree
 E. (23/29 = 79%) Strongly agree
 Average Answer= 4.79



14) My child will be well prepared for college because of the education provided by AIMS

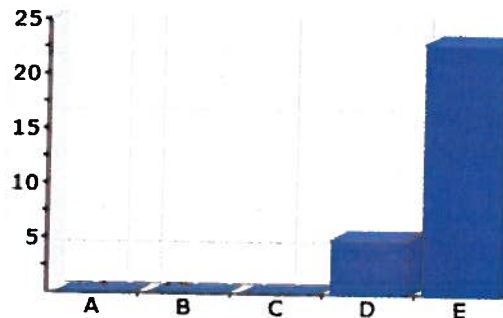
A. (2/29 = 6%) Do not know
 B. (0/29 = 0%) Strongly Disagree
 C. (0/29 = 0%) Disagree
 D. (4/29 = 13%) Agree
 E. (23/29 = 79%) Strongly agree
 Average Answer= 4.59



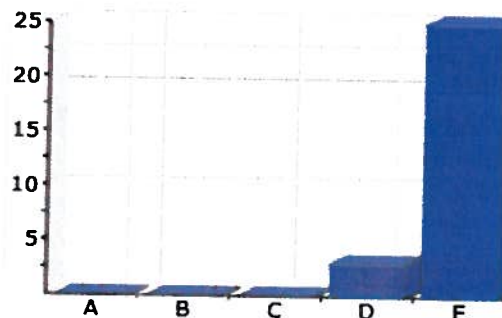
15) My child receives an excellent education

A. (0/28 = 0%) Do not know
 B. (0/28 = 0%) Strongly Disagree

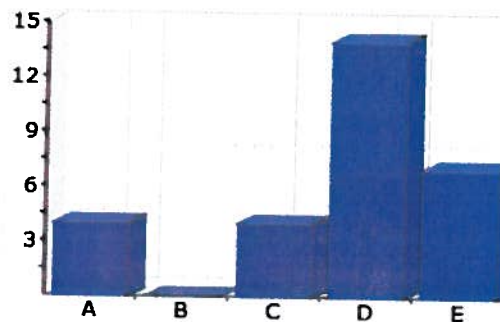
C. (0/28 = 0%) Disagree
 D. (5/28 = 17%) Agree
 E. (23/28 = 82%) Strongly agree
 Average Answer= 4.82



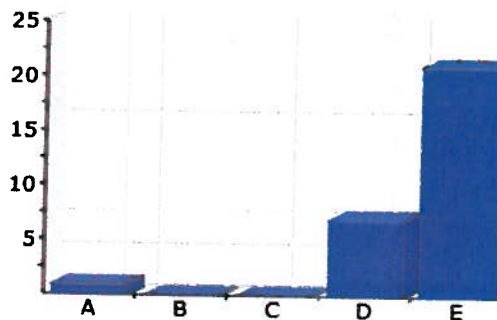
16) I am aware AIMS is in high demand
 A. (0/28 = 0%) Do not know
 B. (0/28 = 0%) Strongly Disagree
 C. (0/28 = 0%) Disagree
 D. (3/28 = 10%) Agree
 E. (25/28 = 89%) Strongly agree
 Average Answer= 4.89



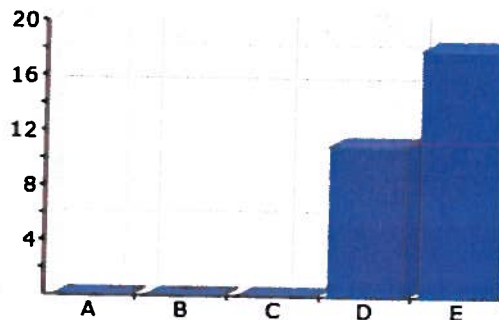
17) I would participate in parenting classes that address adolescent issues, sponsored by the counseling department
 A. (4/29 = 13%) Do not know
 B. (0/29 = 0%) Strongly Disagree
 C. (4/29 = 13%) Disagree
 D. (14/29 = 48%) Agree
 E. (7/29 = 24%) Strongly agree
 Average Answer= 3.69



18) AIMS curriculum is more rigorous than that of traditional schools
 A. (1/29 = 3%) Do not know
 B. (0/29 = 0%) Strongly Disagree
 C. (0/29 = 0%) Disagree
 D. (7/29 = 24%) Agree
 E. (21/29 = 72%) Strongly agree
 Average Answer= 4.62



19) I am aware that if my child does not meet state standards, he/she will be retained
 A. (0/29 = 0%) Do not know
 B. (0/29 = 0%) Strongly Disagree
 C. (0/29 = 0%) Disagree
 D. (11/29 = 37%) Agree
 E. (18/29 = 62%) Strongly agree
 Average Answer= 4.62



20) I believe that in general the school and its personnel care about my child's academic performance
 A. (0/28 = 0%) Do not know
 B. (0/28 = 0%) Strongly Disagree

C. (0/28 = 0%) Disagree
D. (4/28 = 14%) Agree
E. (24/28 = 85%) Strongly agree
Average Answer= 4.86

